

# ACCESS FITTINGS ATTACCHI DI CARICA

ACCESS FITTINGS																
Type	Figure	Connections										PS [bar]	Dimensions [mm]		Weight [g]	Pcs per box
		SAE Flare	NPT	Ø ODS		Ø IDS (1)		Ø IDS (2)		Ø IDS (3)			E	L		
				[in]	[mm]	[in]	[mm]	[in]	[mm]	[in]	[mm]					
FA2-M6	A	1/4"	-	-	6	-	-	-	-	-	-	26	11	10	100	
FA2-1/4		1/4"		1/4"	-	-	-	-	-	-	-	26	11	10	100	
FA2-M6-8-10		1/4"		-	6	-	-	-	8	-	10	30	11	10	100	
FA2-04		1/4"		-	-	-	6	-	-	-	-	26	11	10	100	
FA2-05		5/16"		-	-	-	7	3/8"	-	-	-	27	14	20	100	
FA2-07		5/16"		-	-	-	6	3/8"	-	-	-	27	14	20	100	
FA2-M5-1/4-3/8		1/4"		-	5	1/4"	-	-	8	3/8"	-	26	11	10	100	
FA2-2M6L50	B	1/4"	-	-	-	-	6	-	-	-	-	140	50	11	15	100
FA2-2M 6L90		1/4"		-	-	-		-	-	-	90	11	20	100		
FA2-2M6L10		1/4"		-	-	-		-	-	-	100	11	25	100		
FA2-2M6L65		1/4"		-	-	-		-	-	-	65	11	18	100		
FA2-2M6L13		1/4"		-	-	-		-	-	-	130	11	30	100		
FA2-1/8NPT	C	1/4"	1/8"	-	-	-	-	-	-	-	-	28	11	10	100	
FA2-2NPT		1/4"	1/4"	-	-	-	-	-	-	-	-	33	14	25	100	
FA2-2	D	1/4"	-	-	-	-	-	-	-	-	-	31	11	15	100	

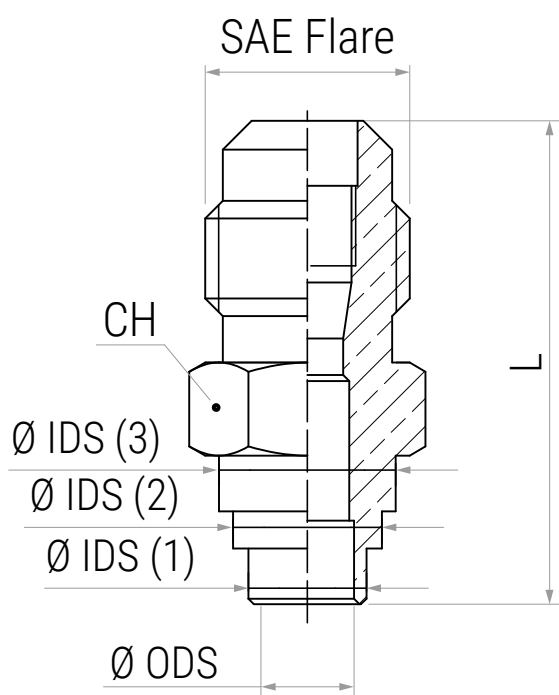
NOTE:

Caution! In SAE Flare, brass-brass couplings, it is strongly recommended to interpose copper flare gaskets in order to ensure a perfect seal."

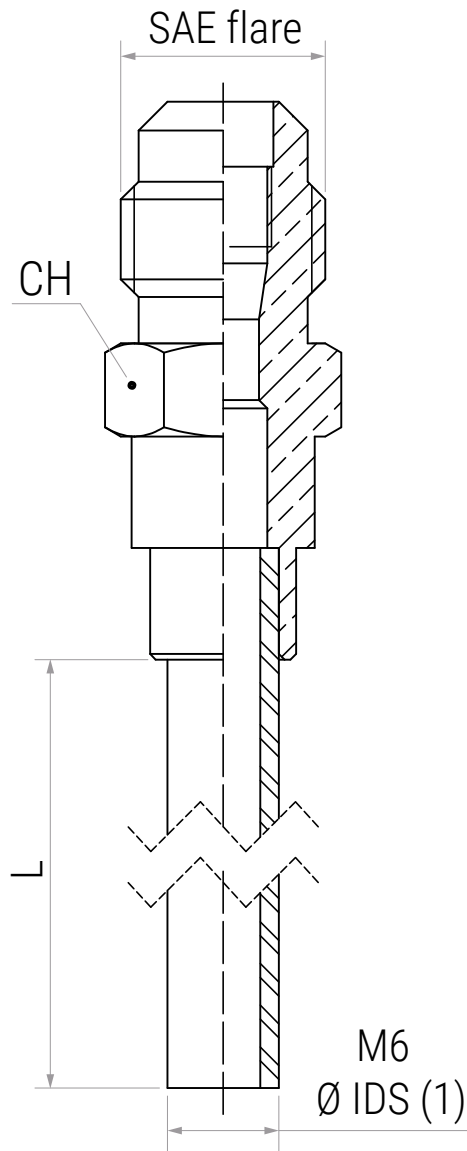
NOTA:

Attenzione! Negli accoppiamenti SAE Flare, ottone-ottone, si consiglia fortemente di interporre le guarnizioni troncoconiche in rame, al fine di garantire una tenuta perfetta.

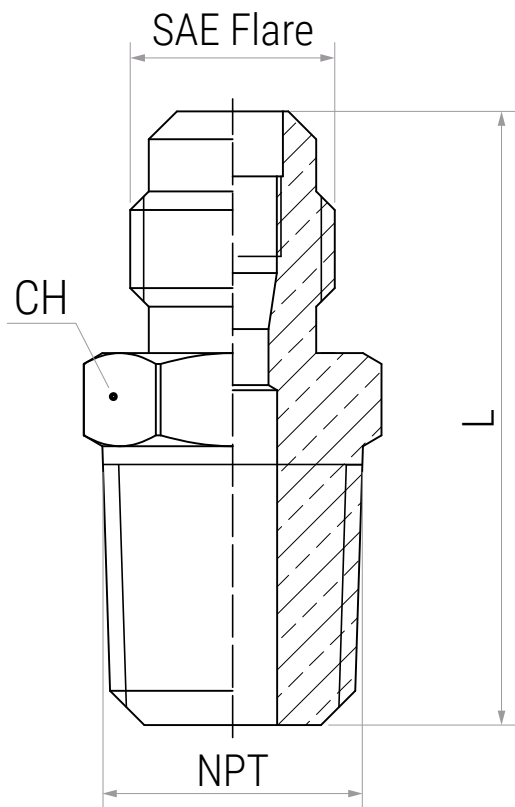
● A



● B



● C



● D

