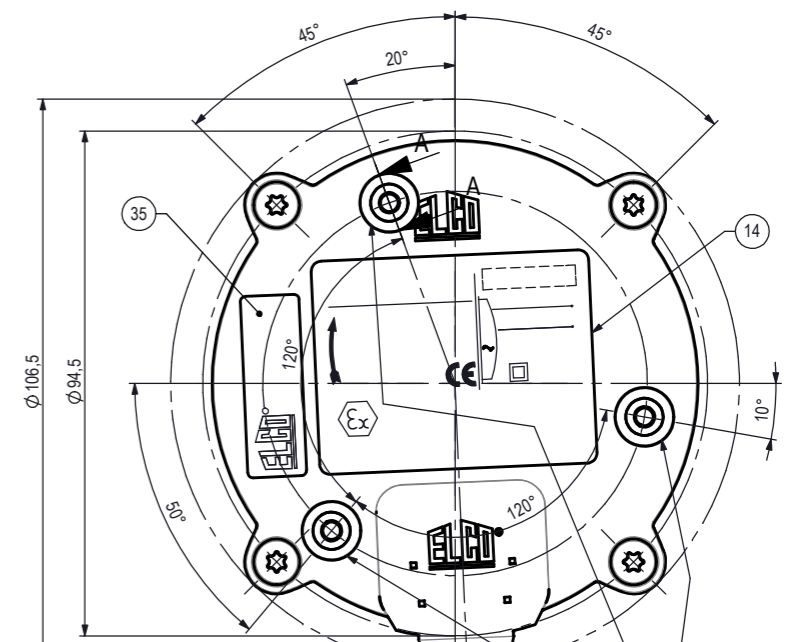
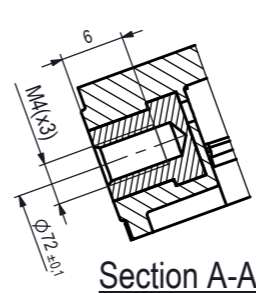
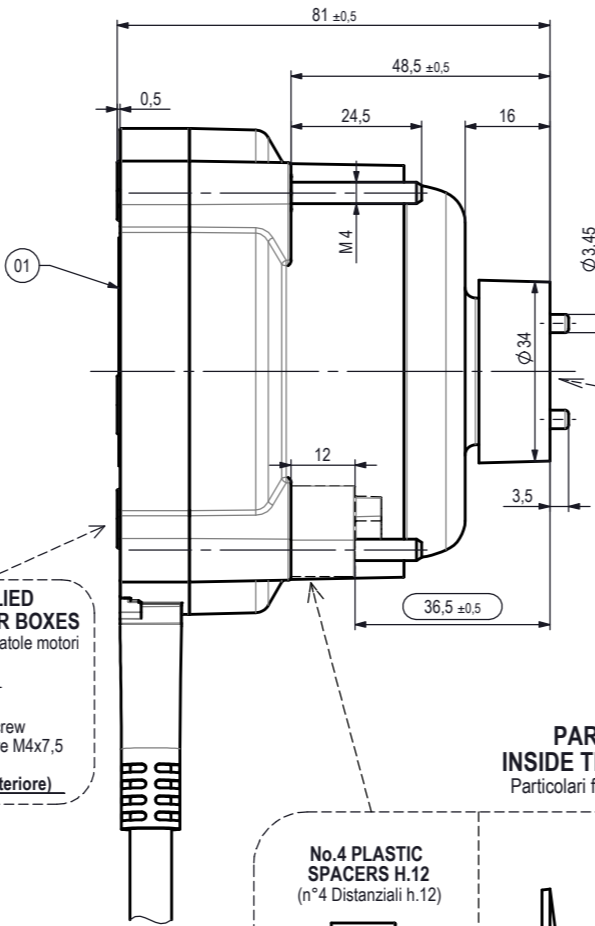
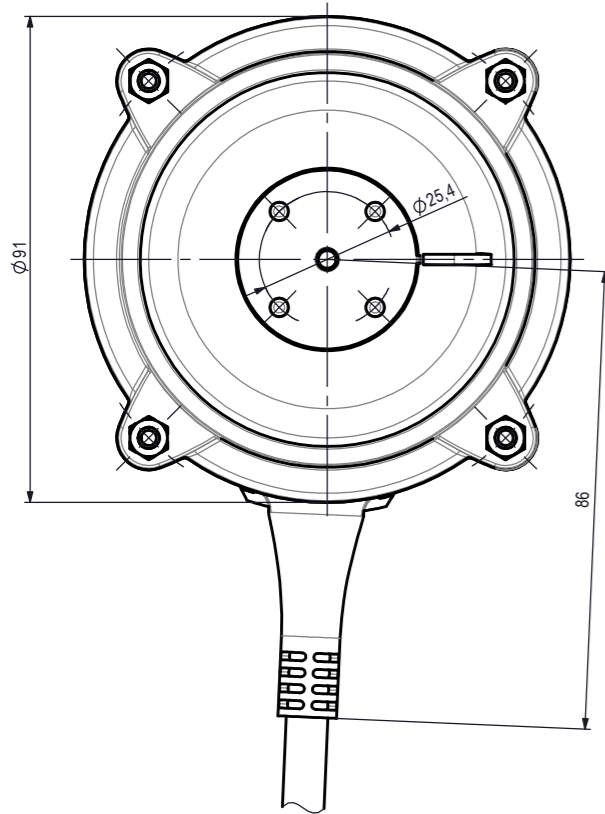


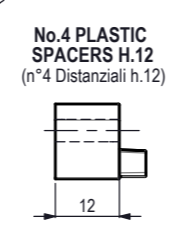
CCW ROTATION
ROTAZIONE ANTIORARIA



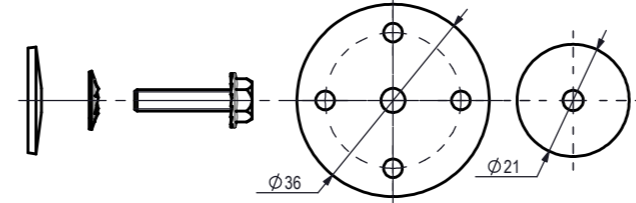
**PARTS SUPPLIED
INSIDE THE MOTOR BOXES**
Particolari forniti nelle scatole motori



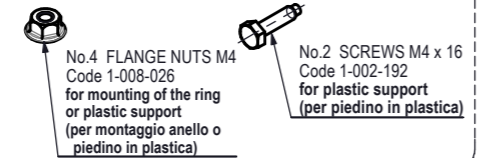
**PARTS SUPPLIED
INSIDE THE MOTOR BOXES**
Particolari forniti nelle scatole motori



**RUBBER WASHERS FOR THE FIXING
OF THE ALUMINIUM FAN BLADE**
RONDELLE IN GOMMA
PER VENTOLE ALLUMINIO



**PARTS SUPPLIED
INSIDE THE MOTOR BOXES**
Particolari forniti nelle scatole motori

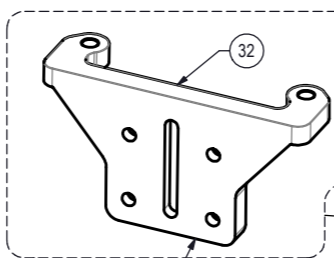


**No.3 M4
THREADED INSERTS
(N°3 Inerti Filettati M4)**

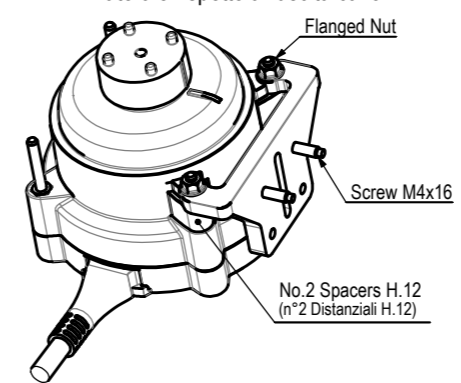
H03V2V2-F
2 x 0,5mm²
or
SVT 2 x AWG18

1000 ±30
CABLE LENGTH
SPORGENZA CAVO

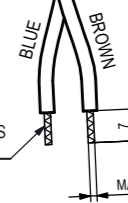
**MOUNTING OF PLASTIC SUPPORT
(with 2 spacers h.12)**
Attention: SIDE Mounting
compared to the output of the cable
Montaggio del piedino (con 2 distanziali H.12)
laterale rispetto all'uscita cavo.



**PART SUPPLIED
INSIDE THE MOTOR BOXES**
(Particolare fornito nelle scatole motori)
**Insert No.1 plastic support in each cell
of packaging motor**
(Inserire n°1 piedino in ogni cella
di imballo motore.)



No.2 POINT TERMINALS
(N°2 Terminali a puntale)



PEREMPTORY

Running test after the complete assembly, **cable included**
(Eseguire il collaudo ad assemblaggio completo, **cavo incluso**)

CLASS "B" MOTOR - BALL BEARINGS MANUFACTURED (Motore in classe "B" - Esecuzione a Cuscinetti)	
ELECTRONIC BOARD (Scheda elettronica)	HBR-SR
PLASTIC BODY (Corpo in plastica)	-
PLASTIC BACK COVER with M4 THREADED INSERTS (Fondello in plastica con inserti filettati M4)	-
PLASTIC FAN BLADE HUB (Portaventola in plastica)	-
ASSEMBLING SPECIFICATION (Normativa di Assemblaggio)	EL.UN.0098
OPERATING INSTRUCTIONS	OI-ECM/07
ONLY MOTOR - ELECTRICAL SPECIFICATION (Solo Motore - Prescrizione controllo elettrico)	M.2298/28
MOTOR WITH FAN BLADE SUGGESTED for SPEED TEST- ELECTRICAL SPECIFICATION (Motore con ventola suggerita per Test di velocità - Prescrizione controllo elettrico)	F.2298/28A

MOD. ECM HBR 12-10-2
CODE HBR12A0EC3014

230V ~ 50/60Hz Cl.B
9/14W 0,12A IP65
1400Rpm
E.P. + TOP DATE (..)

Print Factory ID

REGULATORY MARKS: CE, VDE, etc.

II 3G Ex ec IIB T5 Gc
Warning: Don't un-plug when energized
Don't open when energized

PAY ATTENTION:
PRINT
MANUFACTURER ADDRESS
see ISTR.028

Rel	Date	Description	Checked
D	03/03/23	Updated the cable type note (added alternative)	R. Solgiu S. Crippa
C	20/05/22	Updated cable type (was SVT 2 x AWG18)	R. Solgiu E. Crippa
B	14/02/22	Added UKCA and VDE logo in nameplate	R. Solgiu E. Crippa
A	27/04/21	Updated ATEX Marking in the data label (II 3G Ex ec IIB T5 Gc was II 3G Ex ec IIA T5 Gc) and added electrical specifications	M. Cazzaniga E. Crippa

For dimension without tolerance see standard UNI EN 22768-mK

Regal Rexnord
Regal Rexnord Italy S.p.A.

Drawn M.Cazzaniga
Date 08/02/21
Check E.Crippa
Scale ---

Treatment
Material

MOTOR ECM 12 230V HBR A
230V 50/60Hz - 1400rpm
VDE + ATEX Rules

Weight gr.
Ref. No. EFE12100V0445
Release
HBR12A0EC3014

MODIFICATIONS

DRAWING MADE BY CAD HAND MADE MODIFICATIONS ARE FORBIDDEN

THIS DRAWING IS OUR PROPERTY. ANY PARTIAL OR COMPLETE COPY IS FORBIDDEN WITHOUT PREVIOUS WRITTEN AUTHORISATION