

## **SPARE PARTS RICAMBI**

- **SPARE PARTS FOR CHECK VALVES CV  
RICAMBI PER VALVOLE DI RITEGNO CV**
- **SPARE PARTS FOR CAPPED VALVES CSV  
RICAMBI PER RUBINETTI A CAPPELLOTTO CSV**
- **SPARE PARTS FOR REPLACEABLE CORE FILTERS CSR  
RICAMBI PER FILTRI RICAMBIABILI CSR**

# NUTS BOCCHETTONI

NUTS											
Type	Type of connection	SAE Flare	Copper pipe		PS [bar]	Dimensions [mm]			Tightening torque min ÷ max [Nm]	Weight [g]	Pcs per box
			Ø [in]	Ø [cm]		ØD	L	CH			
FN2-C	SAE Flare for inch and metric tubing	1/4"	-	-	140	-	15	17	11 ÷ 14	20	100
FN2-2		1/4"	1/4"	6		6,5	15	17	11 ÷ 14	18	100
FN3-2		3/8"	1/4"	6		6,5	19	22	11 ÷ 14	36	25
FN3-3		3/8"	3/8"	-		9,7	19	22	20 ÷ 25	35	25
FN3-M8		3/8"	-	8		8,3	19	22	20 ÷ 25	36	25
FN3-M10		3/8"	-	10		10,3	19	22	20 ÷ 25	35	25
FN4-3		1/2"	3/8"	-		9,7	22	25	20 ÷ 25	53	25
FN4-4		1/2"	1/2"	-		13	22	25	34 ÷ 47	48	25
FN4-M10		1/2"	-	10		10,3	22	25	34 ÷ 47	52	25
FN4-M12		1/2"	-	12		12,3	22	25	34 ÷ 47	50	25
FN5-4		5/8"	1/2"	-		13	24,5	28	34 ÷ 47	69	20
FN5-5		5/8"	5/8"	16		16,3	24,5	28	54 ÷ 75	65	20
FN5-M12		5/8"	-	12		12,3	24,5	28	54 ÷ 75	70	20
FN6-6		3/4"	3/4"	-		19,4	29	33	68 ÷ 71	97	20
FN6-M18		3/4"	-	18		18,3	29	33	68 ÷ 71	98	25
FN7-7		7/8"	7/8"	22		22,5	31,8	41	90 ÷ 120	165	20
US4-4	SAE Flare twin nuts	1/4"	-	-	6,3	31	17	11 ÷ 14	39	50	
US4-6		3/8"	-	-	10	39	22	20 ÷ 25	70	50	
US4-8		1/2"	-	-	12	42	25	34 ÷ 47	80	50	

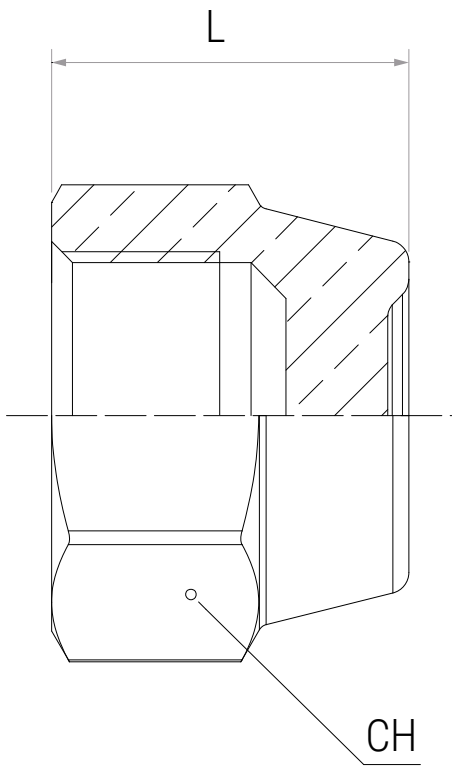
**NOTE:**

Caution! In SAE Flare, brass-brass couplings, it is strongly recommended to interpose copper flare gaskets in order to ensure a perfect seal.\*

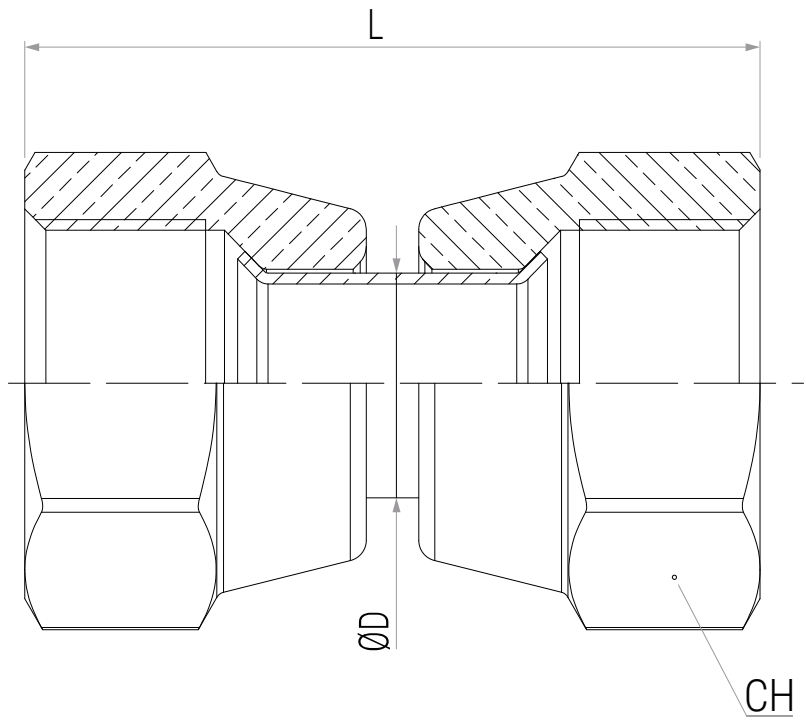
**NOTA:**

Attenzione! Negli accoppiamenti SAE Flare, ottone-ottone, si consiglia fortemente di interporre le guarnizioni troncoconiche in rame, al fine di garantire una tenuta perfetta.

● FN2 - C



● US4 - ..



● FN ..

